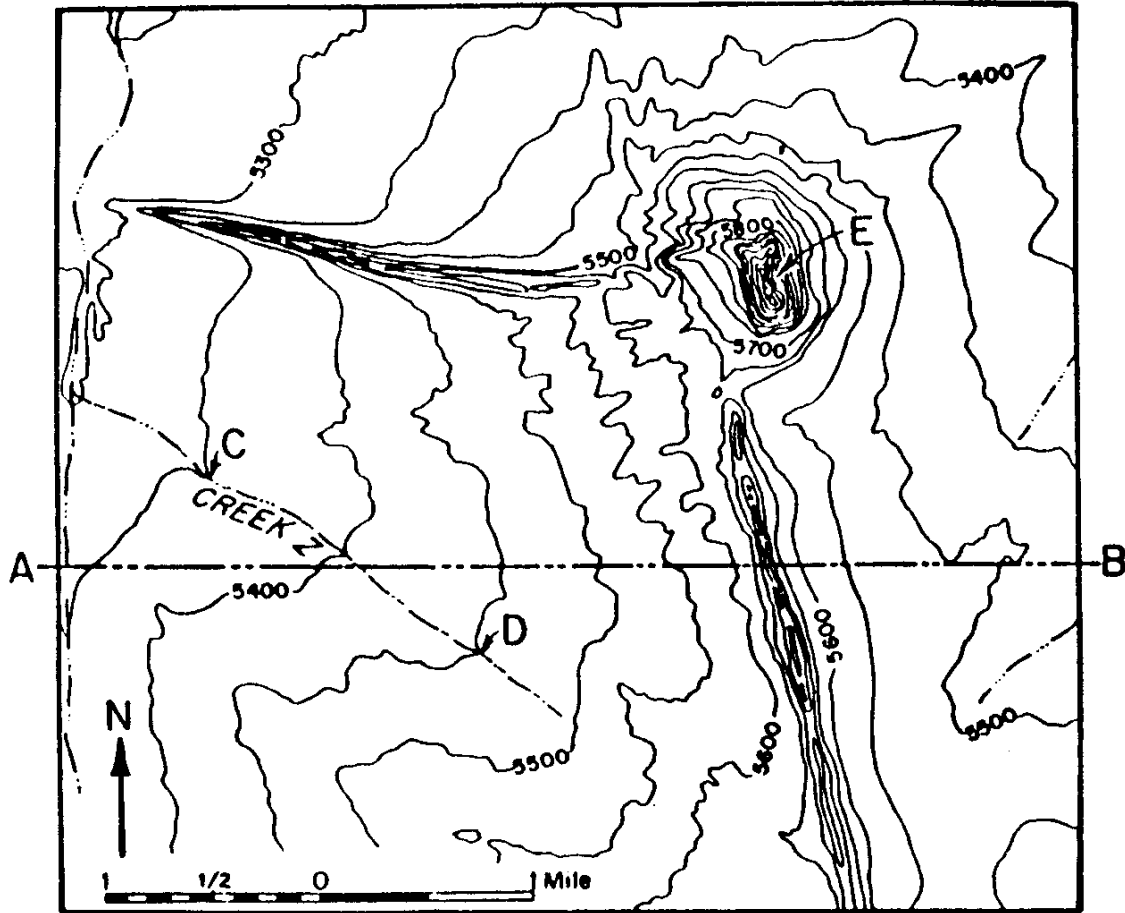


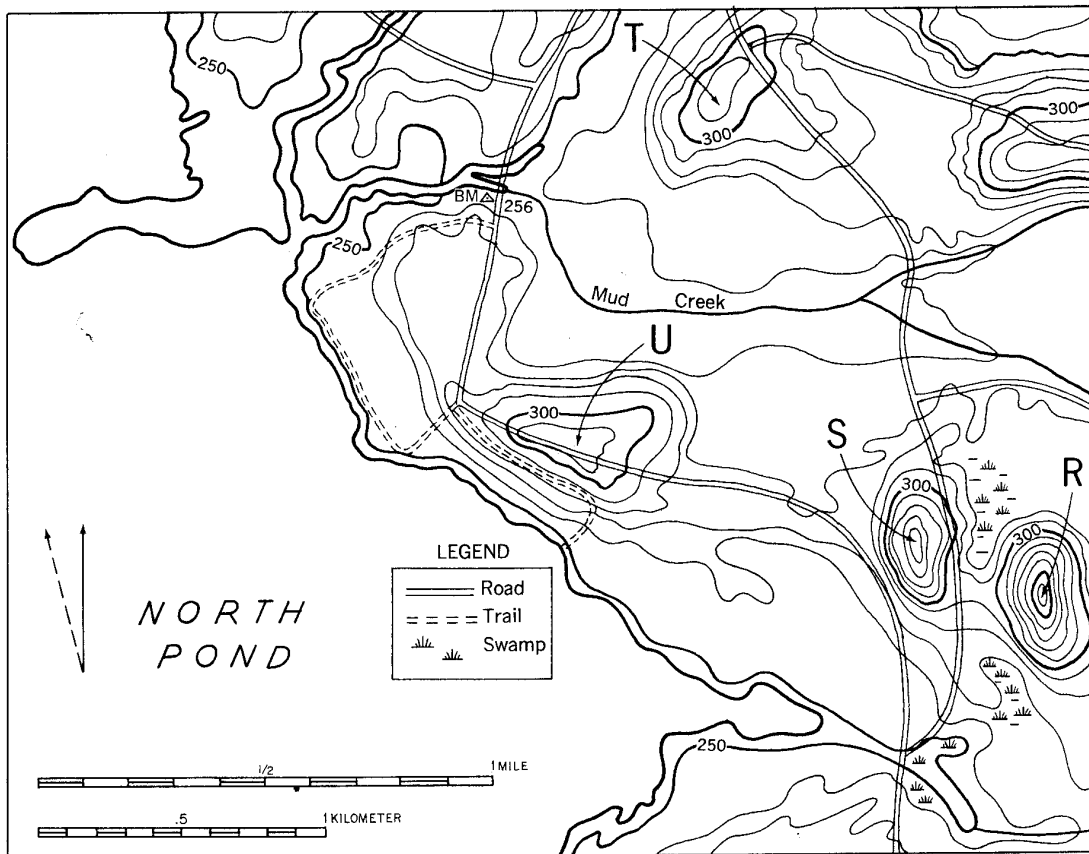
## Field Maps and Isolines Review #1

Base your answers to **questions 1-4** on the contour map of a section of New Mexico shown below.



- The contour interval of the map is
  - 500 feet
  - 50 feet
  - 100 feet
  - 20 feet
- Creek Z flows toward the
  - northwest
  - southwest
  - northeast
  - southeast
- What is the elevation of point D?
  - 5400 ft
  - 5500 ft
  - 5450 ft
  - 5550 ft
- In which portion of the map is the total area of gentle (flattest) slopes greatest?
  - northeast
  - southeast
  - northwest
  - southwest
- As gradient increases, the distance between isolines
  - increases
  - decreases
  - remains the same

Use the map below to answer questions 6-12.



6. What is the contour interval of this map? \_\_\_\_\_

7. Find the trail that starts at a road, just below the benchmark at BM 256, and follow it around until it again joins the road. Use the scales to find the length of this trail in both miles and in kilometers.

\_\_\_\_\_ miles                      \_\_\_\_\_ kilometers

8. Which of the lettered hills has the highest elevation? \_\_\_\_\_

9. What is the highest possible elevation of the hill selected in the previous question? \_\_\_\_\_

10. In which direction does Mud Creek flow? \_\_\_\_\_

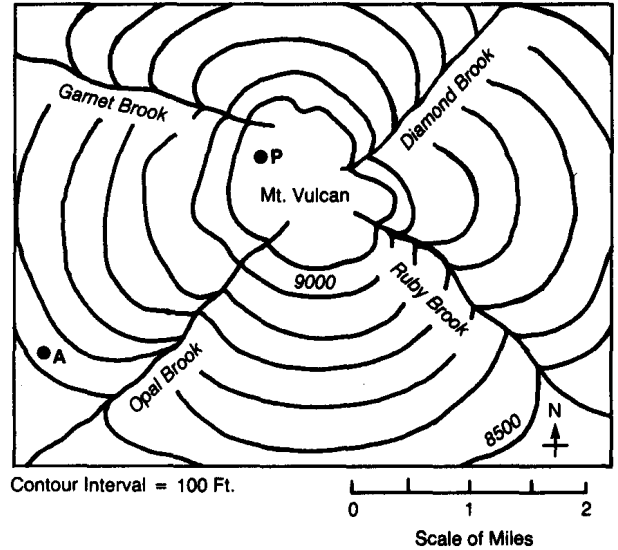
11. Which side of hill T has the gentlest (least) gradient? \_\_\_\_\_

12. What is the approximate elevation of edge of North Pond? \_\_\_\_\_

13. The contour interval is
- (1) the distance between two contour lines
  - (2) a line joining points at the same elevation above sea level
  - (3) the difference in elevation between two consecutive contour lines
  - (4) the spacing between contour lines on a map.

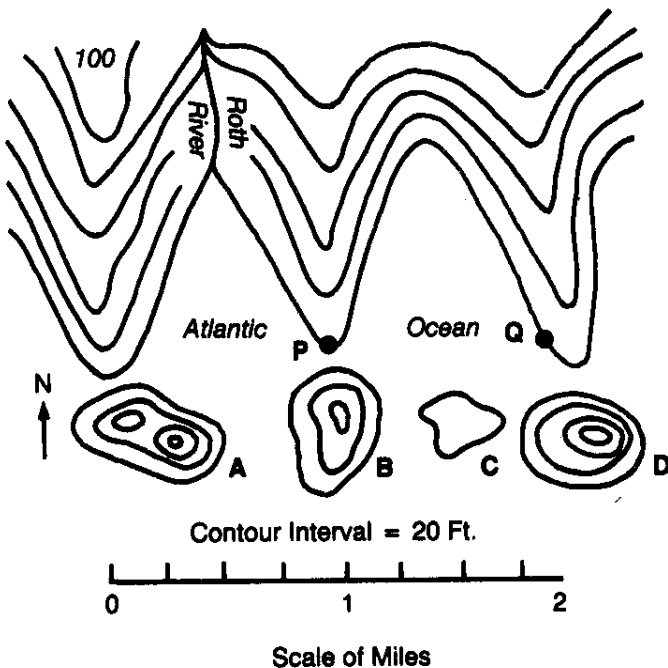
Use the map to the right to answer **questions 14-18**.

14. What is the range of possible elevations of point P? \_\_\_\_\_
15. How high is point A? \_\_\_\_\_
16. Which brook flows northeast? \_\_\_\_\_
17. Which brook flows southwest? \_\_\_\_\_
18. How far is it from point A to point P to the nearest tenth of a mile? \_\_\_\_\_



19. Generally speaking, how do contour lines show the direction of river flow?
20. If Mt. Vulcan was a volcano and there was a contour line with hachures located just inside the 9100 ft. contour line, what would that line with hachures be labeled?
- (1) 8900 ft.
  - (2) 9000 ft.
  - (3) 9100 ft.
  - (4) 100 ft.

Use the map below to answer **questions 21-26**.



21. Which island is less than 20 feet high? \_\_\_\_\_
22. Which island has the steepest eastern slope? \_\_\_\_\_
23. Which island has two hilltops? \_\_\_\_\_
24. How far is it from P to Q? \_\_\_\_\_
25. How high is Point P? \_\_\_\_\_
26. Which direction is the Roth River flowing? \_\_\_\_\_