

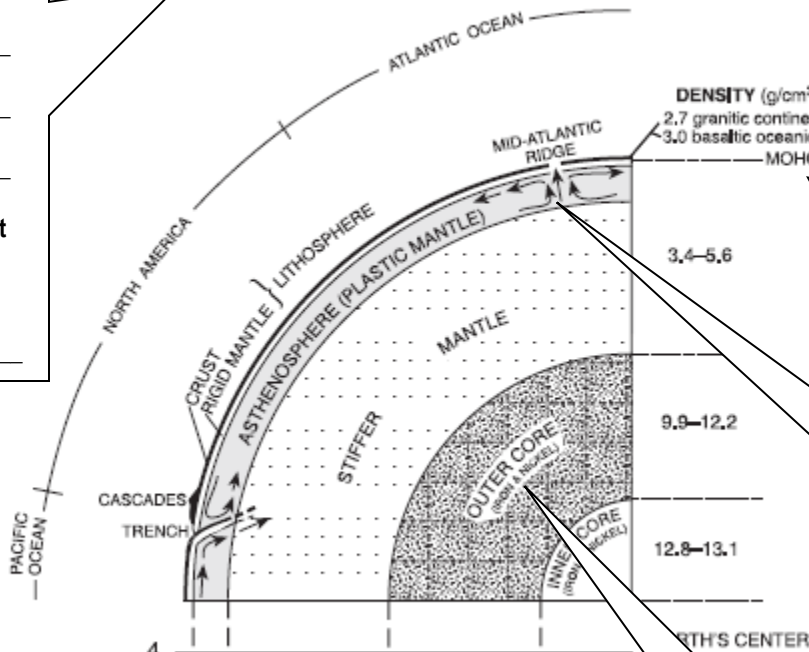
Topic : Plate Tectonics

Aim:

1. Knowledge of Earth's interior is based on

When Earth formed, it separated into layers based on

Inferred Properties of Earth's Interior



2a. continental crust

2b. oceanic crust

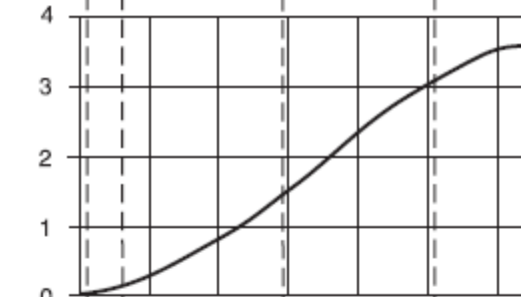
3. Moho -

4. Asthenosphere -

5. Outer Core -

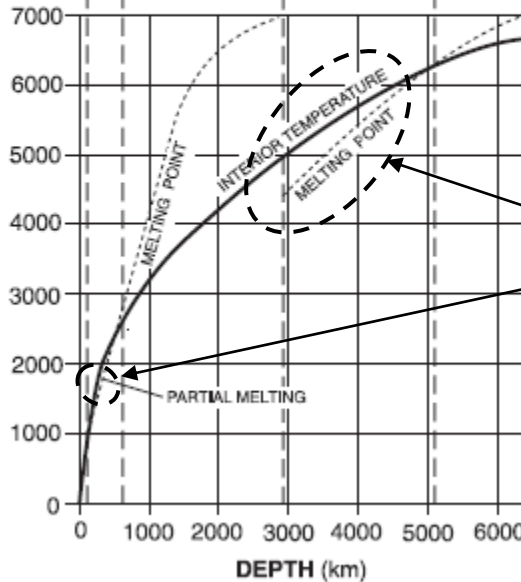
6.

PRESSURE
(million atmospheres)



7.

TEMPERATURE (°C)



Since the actual temperature is higher than the melting point of the material in these layers, the material melts fully or partially and has the properties of a liquid.